

Special Features

- Sealed against moisture and dust – gasket option and IP67 sealing available
- Optional internal resistor for 5V-48VDC
- Resistant to shock and vibration
- Solder lug/faston termination for fast, easy installation
- New longer threads for thicker panels

Specifications

- Mounting hole: 0.319" +.004/-0.000" (8.10 mm +0.10/-0.00 mm)
- Termination: 24AWG UL1061 6.0" (152.4mm) red (anode) and black (cathode) leads stripped .250" (6.35 mm) standard or 2.8 x 0.5mm fastons (gold faston = anode and silver faston = cathode)
- Housing: Chrome-plated brass housing or black matte finish
- Maximum panel thickness: .354" (9.0mm)
- Mounting torque: 20 ± 2 in-lb (2.26 ± 0.23 N-mm)

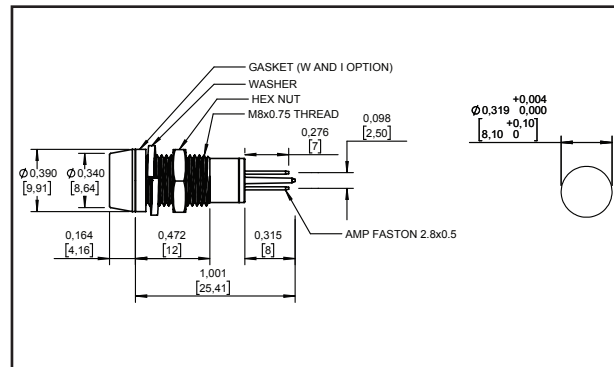
Electrical and Optical Characteristics (TA = 25°C)

LED Part #	Color	Luminous Intensity (mcd) Typ. @ I _f (mA)	V _f Typ. @ I _f (mA)	Viewing Angle 2θ 1/2	Peak Wavelength (nm)		
HIGH EFFICIENCY							
3008	Red	11.0	10	1.9	10	60°	635
3019	Green	14.0	10	2.1	10	60°	565
3020	Yellow	8.0	10	2.0	10	60°	583
3022	Orange	7.0	10	1.9	10	60°	600
ULTRA BRIGHT - DAYLIGHT READABLE							
3056	Red	400.0	20	1.9	20	30°	660
3055	Yellow	400.0	20	2.0	20	30°	590
3054	Green	300.0	20	3.2	20	30°	520
3060	Orange	600.0	20	2.1	20	30°	610
SUPER ULTRA BRIGHT							
3036	Red	2800.0	20	1.85	20	20°	660
3046	Yellow	900.0	20	1.9	20	30°	626
3047	Green	5490.0	20	3.2	20	20°	520
3048	Amber	1300.0	20	2.02	20	30°	592
BLINKING (Operates at 3.5V to 14V, blinking frequency from 3.0Hz to 1.5 Hz)							
4002	Red	198.0	22	5.0	22	60°	660
BICOLOR (2 leaded)							
9001	Red	30.0	20	2.0	20	60°	627
	Green	30.0	20	2.2	20		565
9002	Yellow	30.0	20	2.1	20	60°	590
	Green	30.0	20	2.2	20		565
BLUE							
3057	Blue	640.0	20	3.3	20	20°	468
WHITE							
3061	White	27000.0	20	3.2	20	15°	N/A



5mm Panel Mount LED Assemblies

Package Dimensions



All dimensions are in inches (mm)

Resistor Chart

OPERATING SPECIFICATIONS				
Resistor Value Code	Voltage	Current (mA)	Resistor Value (Ohms) Green, Yellow Red, Bicolor LED	Resistor Value (Ohms) Blue, White LED
0000	2	10 or 20	None	Not Available
9900	5	10	332	
9928	5	10		121
9901	12	10	1000	
9902	12	10		715
9903	24	10	2210	
9904	24	10		1910
9905	28	10	2610	
9906	28	10		2320
9907	5	20	150	
9922	5	20		65
9908	12	20	511	
9909	12	20		357
9910	24	20	1100	
9911	24	20		953
9923	28	20	1500	
9933	28	20		1300
9912	48	9	4870	
9913	48	9		4530

How To Order

